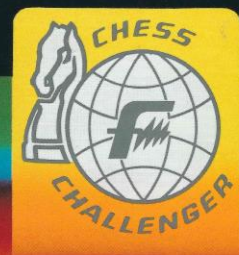


FIDELITY
INTELLIGENT
COMPUTER GAMES



Fidelity Intelligent Computer Games

Spring 1989

(photo copyright © by <http://www.schaakcomputers.nl/>) (600 dpi)

A MACH III MASTER 2325 (Model 6110)

The world's HIGHEST RATED chess computer! Officially rated 2325 by the U.S. CHESS FEDERATION. For the true aficionado.

B ELITE AVANT GARDE 2265 (Model 6114)

The world's finest chess computer with tournament-size inlaid board, nutwood housing, two displays, auto-sensory squares, and a certified rating of 2265, making it an official CHESS MASTER.

C DESIGNER DISPLAY 2100 (Model 6106)

Certified rating of 2100 by the U.S. CHESS

FEDERATION makes this computer play better than 95% of the world's population at its highest level. Built-in LCD display reveals clock time, positional score, search depth - you can even watch while the computer displays the moves it's considering!

DESIGNER DISPLAY 2000 (Model 6105)

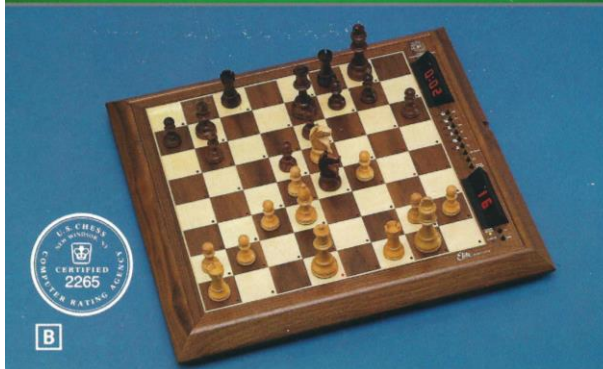
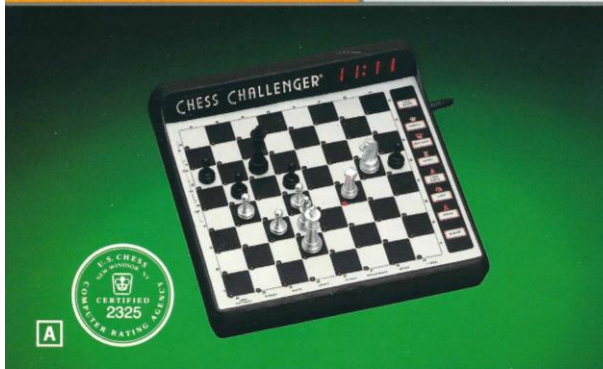
Estimated strength of 2000 rating points, with all the display features of Model 6106.

D DESIGNER 2100 (Model 6103)

2100 rating certified by the U.S. CHESS FEDERATION with a myriad of features for beginner to tournament players.

MACH III MASTER 2265 (Model 6113)

Take home a certified chess master in a box. Officially rated 2265 by the U.S. CHESS FEDERATION (master rating begins at 2200), each unit includes a certificate verifying that this product is an NATIONAL CHESS MASTER.



Fidelity Intelligent Computer Games Spring 1989

(photo copyright © by <http://www.schaakcomputers.nl/>) (600 dpi)

NB: A = Mach IV Master 2325 - Model 6110 (release February 1989)

E DESIGNER 2000 (Model 6102)
For beginner to advanced players. Elegant designer styling in gray, silver and black.

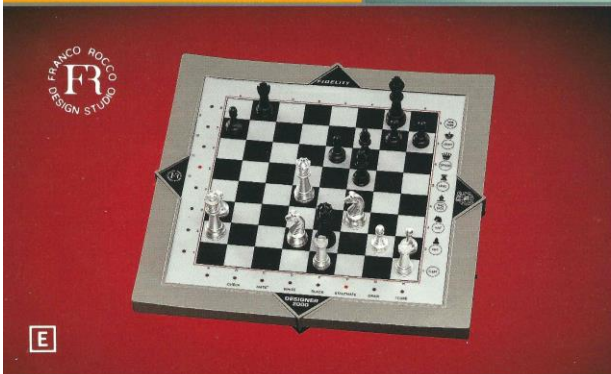
F GENESIS (Model 6108)
The elegant look of walnut with storage pouch for chess pieces and memory-save feature.

G GAMBIT (Model 6084)
Our basic model for beginner to intermediate players. Storage compartment for pieces.

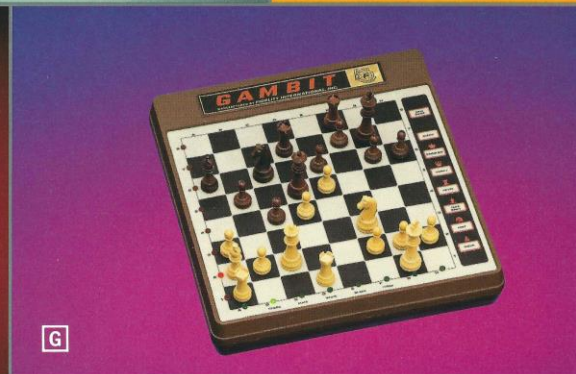
H CHESS PAL (Model 6116)
Perfect for a beginner's first chess computer. LCD display window shows computer's moves. Memory-save feature. Battery operated only.

DESIGNER 1500 'CHESS COACH' (Model 6111)

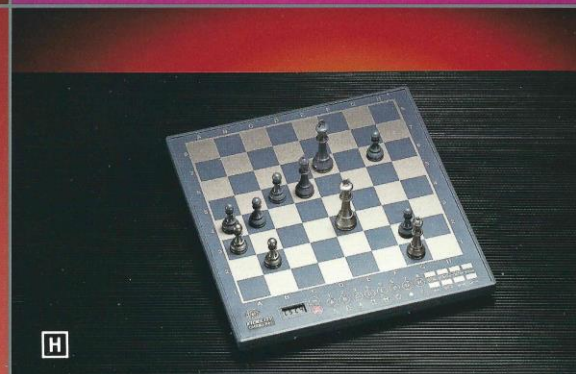
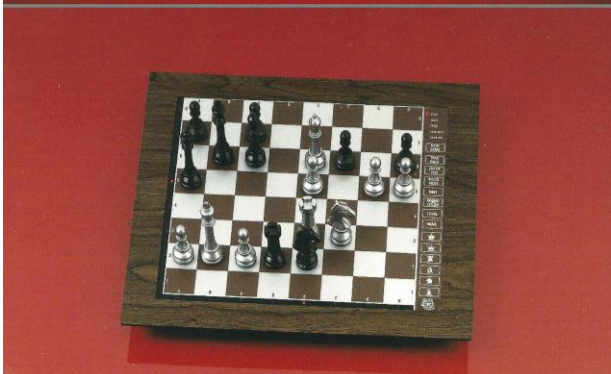
For ages 7 to adult. Chess Coach teaches you how to play chess! Includes 50-minute educational VHS tape produced by the U.S. CHESS FEDERATION that teaches you the rules of chess, how the pieces move, and strategy tips from chess masters on how to improve your game. The DESIGNER 1500 computer will suggest moves for you to make, allow you to take back your last move – you can even watch the computer play against itself!



E



G



H

Fidelity Intelligent Computer Games Spring 1989

(photo copyright © by <http://www.schaakcomputers.nl/>) (600 dpi)

I MINI CHESS (Model 6107)
 Deluxe travel model with sensory board. Includes dust cover and storage compartment for chess pieces. 16 skill levels to choose from. Optional AC operation. Memory-save feature.

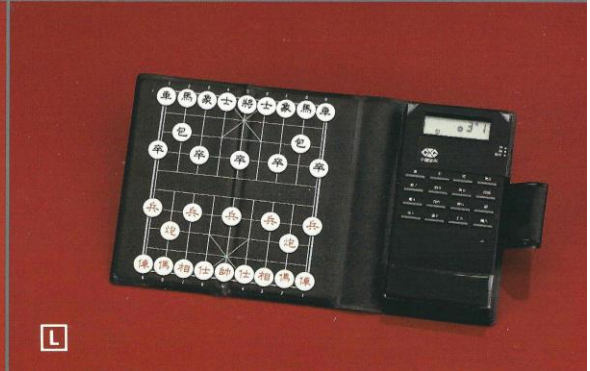
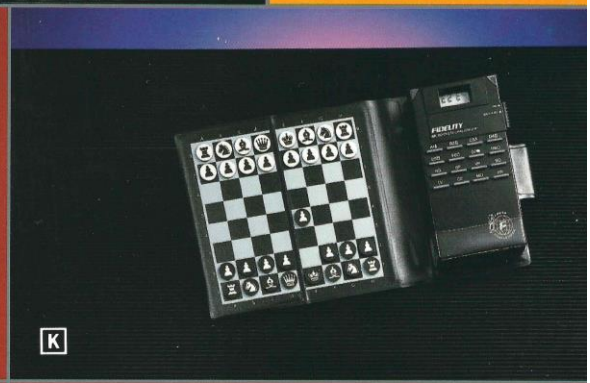
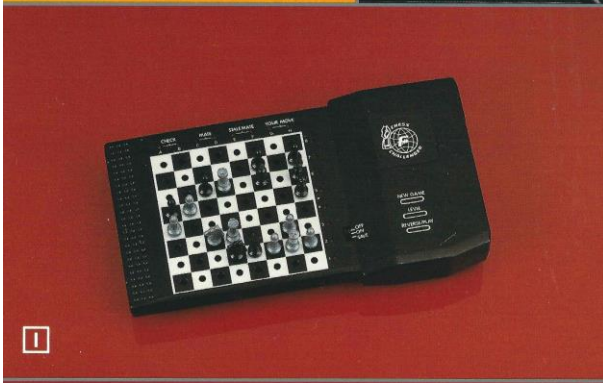
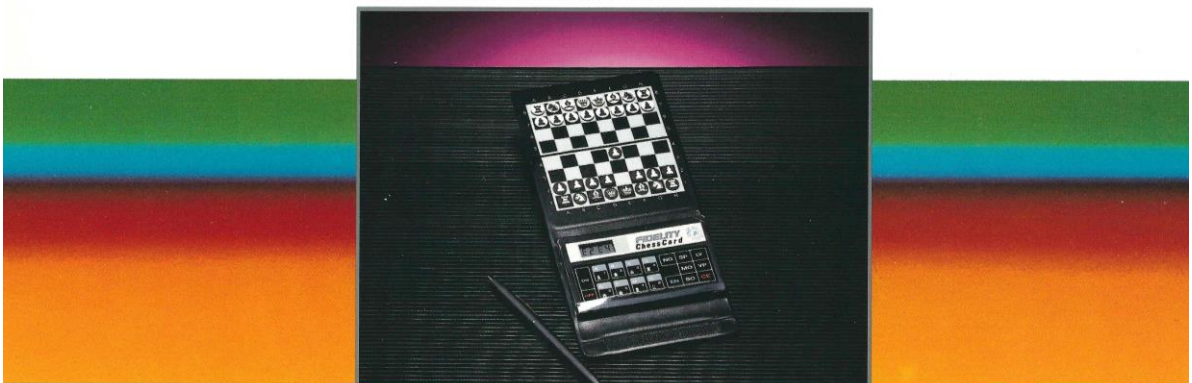
J MICRO BACKGAMMON (Model 8004)
 Pocket-size backgammon computer with 8 levels of skill. Computer can generate dice rolls internally and display them, or you may roll actual dice and enter the die values. Verify location of pieces at the beginning or during a game—a great feature for beginners! Memory-save feature allows you to store an unfinished game to be resumed at a later time. Easy-to-read LCD (liquid crystal display) shows dice rolls and move entries.

K MICRO CHESS (Model 6096)
 Play chess wherever you travel—weighs only 6 ounces! Selectable skill levels for beginners or casual players. Raised keys for easy entry of your moves. Easy-to-read LCD (liquid crystal display) shows computer's moves. Includes carrying case with built-in magnetic board and pieces. Memory-save feature.

L MICRO CHINESE CHESS (Model 2001)
 World's most popular game fits into your pocket. Raised keys for easy entry of moves. Includes carrying case with built-in magnetic board and chess pieces. Memory-save feature.

CHESS CARD (Model 6115)

The world's smallest chess computer! Credit-card size computer in folding wallet fits anywhere! Includes magnetic pieces, memory-save feature. LCD display shows computer's moves, enter your moves using keyboard.



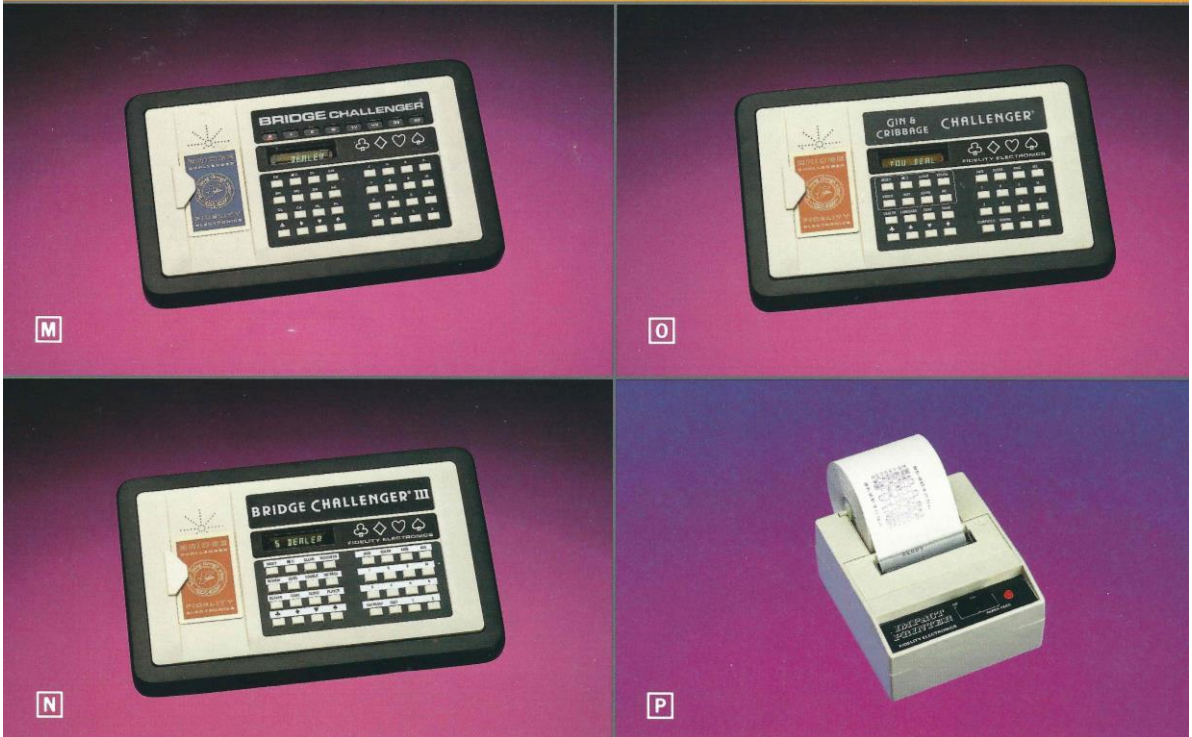
Fidelity Intelligent Computer Games Spring 1989

(photo copyright © by <http://www.schaakcomputers.nl/>) (600 dpi)

FIDELITY INTERNATIONAL
 13900 N.W. 58 Ct., MIAMI, FLORIDA 33014
 TELEPHONE: (305) 557-9800 TELEX: 51-5174 TELEFAX: (305) 558-8487

FIDELITY ELECTRONICS OF CANADA, LTD.
 5682 Ambler Dr., Mississauga, ONTARIO L4W 2K9
 TELEPHONE: (416) 625-7333 TELEX: 06-960343 TELEFAX: (416) 625-0541

- M VOICE BRIDGE II (Model 7002)**
 Play bridge even if you are alone! Bids and plays one, two, three or all four hands. Synthesized voice feature announces computer's bids. Includes carrying case, custom playing cards, and AC adaptor.
- BRIDGE II (Model 7000 - Not shown)**
 Same software and features as Model 7002 without synthesized voice feature.
- N VOICE BRIDGE III (Model 7014)**
 More advanced playing ability than Model 7002, with voice feature.
- BRIDGE III (Model 7015 - Not shown)**
 Same software and features as Model 7014 without synthesized voice feature.
- O GIN/CRIBBAGE (Model 7012)**
 Plays two of the world's most popular card games. Keeps score. Includes carrying case, deck of custom playing cards, AC adaptor.
- P IMPACT PRINTER (Model 1007)**
 For use with Model 6114. Records game moves, board position and time per move.



Fidelity Intelligent Computer Games Spring 1989

(photo copyright © by <http://www.schaakcomputers.nl/>) (600 dpi)



PHANTOM



PHANTOM (Model 6100)
 The ultimate chess opponent! The PHANTOM computer plays against you and actually MOVES ITS OWN PIECES! A certified rating of 2100 by the U.S. CHESS FEDERATION, makes the PHANTOM superior to over 95% of the world's chess players. A terrific chess opponent for all levels of players. Sensory playing surface records your moves. 24 selectable skill levels with an additional 8 mate-solving levels. Lower skill levels for beginners to intermediate players. Built-in LCD

COPYRIGHT © THE SHARPER IMAGE

display shows move time for each player, how many moves ahead the PHANTOM is calculating, and how the PHANTOM scores the current board position. Set up mid-game positions or mate problems for the PHANTOM to solve. For analysis, the PHANTOM will replay the game you just finished, moving pieces for both sides. PHANTOM will suggest moves for you to make with its special hint feature. You can even watch PHANTOM play a game against itself!

Fidelity Intelligent Computer Games Spring 1989

(photo copyright © by <http://www.schaakcomputers.nl/>) (600 dpi)