

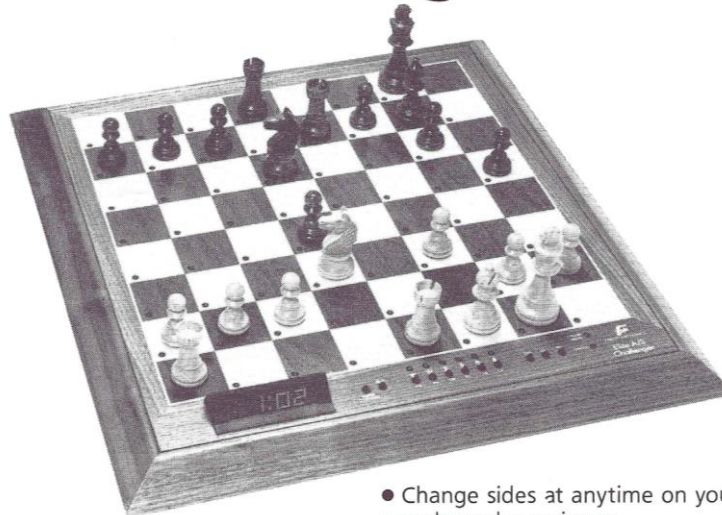
FIDELITY
CHALLENGER
SERIES



Fidelity Challenger Series 1985

(photo copyright © by <http://www.schaakcomputers.nl/>) (600 dpi)

ELITE 4.0 CHALLENGER®



Model E4

WORLD'S STRONGEST COMMERCIALY AVAILABLE CHESS COMPUTER WINNER OF 1983 AND 1984 WORLD MICRO TOURNAMENTS

SOFTWARE FEATURES:

- Fifteen selectable levels. 1-8 automatically adjusts its thinking time for 5 minute games to games lasting several hours. Level 9—is infinite, user activated. Level 10—count down time for blitz games. Level 11—user selectable time control. Level 12—fixed depth iterative search. Level 13—fixed depth non-iterative search. Level 14—problem solving level. Level 15—fixed time search.
- Blitz chess enthusiasts can take advantage of the display window, with large ½-inch characters, which permits the automatic keeping of time for both computer and player. Manufacturer suggests 3 minutes for computer, 5 minutes for player if you are blitz rated under 2000 and want to sharpen your skills.
- Voice feature repeats—all of your moves, repeats all of its moves, and is available in English, French, German or Spanish.
- Thinks on the opponent's time for faster responses and stronger play.
- Book openings selectable—over 3,000 positions.
- Book Practice Mode—learn established book openings.
- Take-Back feature allows you to take back moves right to the beginning of the game.

- Change sides at anytime on your move. You can always be a winner.
- Draws and Stalemates—indicates draws in three separate categories and signals which type applies:
- Player Mode—for regular 2-player games, the computer referees legal moves, draws and can even recommend a move when asked.

SOFTWARE SPECIFICATIONS:

6502 Processor running at 4 megahertz clock speed. Memory capacity is 224,000 bits of Read Only Memory (ROM), 32,000 bits of Random Access Memory (RAM).

HARDWARE FEATURES:

- Large 14" x 14" auto-sensory, inlaid wood playing surface, consisting of switches actuated by magnets in the bases of chess pieces.
- 64 Light Emitting Diodes (LED) indicate moves.
- Printer Outlet—a permanent record of your most interesting games and special positions may be obtained by using optional Fidelity Printer.
- Built-in rechargeable battery saves memory of game for up to three weeks if AC power is interrupted or disconnected.
- Cartridge capability—Fidelity has available a number of cartridges with special openings and middle game features.

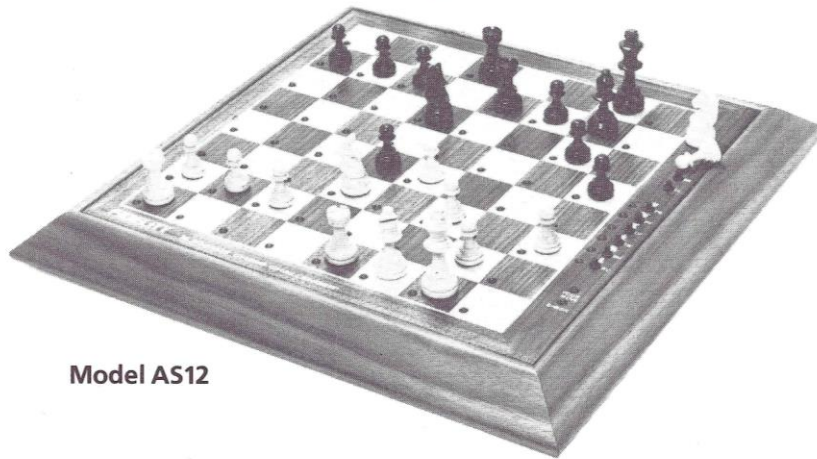
HARDWARE SPECIFICATIONS:

Hand-crafted nutwood housing with inlaid top. 100% solid state. AC adaptor. Hand-carved Staunton wood chess pieces (King almost 4" tall). Brightly lit ½" LED display. Size: 19" x 18" x 1½".

Elite 4.0 Challenger (= Elite A/S Challenger 4 MHz) Fidelity Model E4

(photo copyright © by <http://www.schaakcomputers.nl/>) (600 dpi)

ELEGANCE CHESS CHALLENGER®



Model AS12

FIRST CHALLENGER RATED OVER 2000 ELO WINNER OF CANADIAN COMPUTER TOURNAMENT

SOFTWARE FEATURES:

- Twelve different levels of play. Levels 1-8 automatically adjust computer's thinking time for 5 minute games to games lasting several hours. Level 9 is infinite, user activated. Level 10—mate in two. Level 11—mate in three. Level 12—mate in four.
- Special Easy Mode weakens all skill levels (1-8) without changing time controls.
- Thinks on the opponent's time for faster response and stronger play.
- Book Openings selectable—over 3,000 positions. Cycle through book opening choices for the computer or the player at the touch of a single button.
- Book Practice Mode—learn established book openings. Electronic practice teaches quickly, because game will signal a warning if move played is not in book.
- Take-Back feature allows you to take back moves right to the beginning of the game. Replay a move series asking computer to indicate its suggested move during that move series to see where you may have erred in judgement.
- Change skill level at anytime on your move.
- Change sides at anytime on your move. You can always be a winner.
- Draws and Stalemates—indicates draws in three separate categories and signals which type applies: stalemate, 50-move rule, opponent's or computer's move or position repeated three times.

- Player Mode—for regular 2-player games, the computer referees legal moves, draws and can even recommend a move when asked.
- While thinking, computer can display the moves it is considering making.
- Can suggest a move for you to make and indicate the continuing line of play.

SOFTWARE SPECIFICATIONS:

6502 Processor running at 3.6 megahertz speed. Memory capacity is 160,000 bits of Read Only Memory (ROM), 32,000 bits of Random Access Memory (RAM).

HARDWARE FEATURES:

- Large 10" x 10" auto-sensory inlaid wood playing surface, consisting of switches actuated by magnets in the bases of chess pieces.
- 64 Light Emitting Diodes (LED) indicate moves.
- Printer Outlet—a permanent record of your most interesting games and special positions, may be obtained by using optional Fidelity Printer.
- Built-in rechargeable condenser saves memory of game for up to one hour in the event of accidental power shutdown.
- Cartridge Capability—Fidelity has available a number of cartridges with special openings and middle game features. In the future, end game and other specialized cartridges may become available.

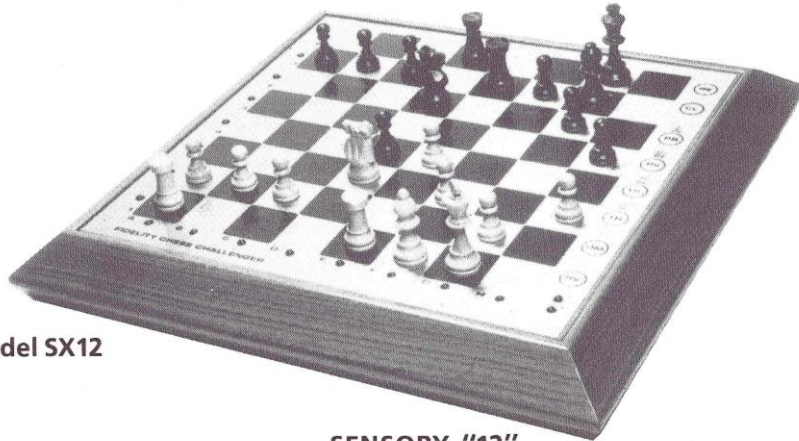
HARDWARE SPECIFICATIONS:

Hand-crafted nutwood housing with inlaid top. 100% solid state. Hand-carved Staunton wood chess pieces. Internal clock keeps track of time control (accuracy \pm 5%). 14" x 14½" x 1¼". AC adaptor.

Fidelity Elegance Chess Challenger (3.6 MHz) Fidelity Model AS12

(photo copyright © by <http://www.schaakcomputers.nl>) (600 dpi)

SENSORY 5.0 CHESS CHALLENGER®



Model SX12

WORLD'S FASTEST COMMERCIALY AVAILABLE CHESS COMPUTER

SOFTWARE FEATURES:

- Twelve different levels of play. Levels 1-8 automatically adjust computer's thinking time for 5 minute games, to games lasting several hours. Level 9— infinite, user activated. Level 10— mate in two. Level 11— mate in three. Level 12— mate in four.
- Special Easy Mode weakens all skill levels (1-8) without changing time controls.
- Thinks on the opponent's time for faster response and stronger play.
- Book openings selectable— over 3,000 positions. Cycle through book opening choices for the player at the touch of a single button.
- Book Practice Mode— learn established book openings. Electronic practice teaches quickly, because game will signal a warning if move played is not in book.
- Take-Back Feature— allows you to take back moves right to the beginning of the game. Replay a move series, asking computer to indicate its suggested move during that move series, to see where you may have erred in judgement.
- Change skill level at anytime, on your move.
- Change sides at anytime, on your move. You can always be a winner.
- Draws and Stalemates— indicates draws in three separate categories and signals which type applies: Stalemate, 50-move rule, opponent's or computer's move or position repeated three times.
- Player Mode— for regular 2-player games, the computer referees legal moves, draws and can even recommend a move when asked.

SENSORY "12" CHESS CHALLENGER (Model SC12)

SAME GREAT FEATURES AS SENSORY 5.0 EXCEPT FOR MAGNETIC PLAYING SURFACE AND BUILT-IN CONDENSOR. USES 6502 PROCESSOR AT 3 MEGAHERTZ CLOCK SPEED.

SOFTWARE SPECIFICATIONS:

6502 Processor running at 5 megahertz clock speed. Memory capacity is 160,000 bits of Read Only Memory (ROM), 32,000 bits of Random Access Memory (RAM).

HARDWARE FEATURES:

- Large 10" x 10" sensory playing surface.
- 16 Light Emitting Diodes (LED) indicate moves.
- Built-in rechargeable condenser saves memory of game for up to one hour in the event of accidental power shutdown.
- Beep tone sounds automatically— to inform you that a move has been made.
- Printer Outlet— a permanent record of your most interesting games and special positions may be obtained by using optional Fidelity Printer.
- Cartridge capability— Fidelity has available a number of cartridges with special openings and middle game features. In the future, end game and other specialized cartridges may become available.

HARDWARE SPECIFICATIONS:

Hand-crafted nutwood housing with Fidelity's sensory top. 100% solid state circuitry. Hand-carved Staunton wood pieces. Playing surface and pieces are magnetic. Internal clock keeps track of time control (accuracy \pm 5%) 14" x 14½" x 1¾". AC adaptor.

Fidelity Sensory 5.0 Chess Challenger (5 MHz) Fidelity Model SX12

(photo copyright © by <http://www.schaakcomputers.nl>) (600 dpi)

EXCELLENCE CHALLENGER®



Model EP12

PLAYING STRENGTH THAT RIVALS OUR VERY BEST MODELS — AND IT'S PORTABLE!

SOFTWARE FEATURES:

- Twelve different levels of play. Levels 1-8 automatically adjust computer's thinking time for 5 minute games, to games lasting several hours. Level 9—infinite, user activated. Level 10—mate in two. Level 11—mate in three. Level 12—mate in four.
- Special Easy Mode weakens all skill levels (1-8) without changing time controls.
- Thinks on the opponent's time for faster responses and stronger play.
- Book openings—over 3,000 positions.
- Take-Back feature—allows you to take back 22 half-moves.
- Change skill level at anytime, on your move.
- Change sides at anytime, on your move. You can always be a winner.
- Draws and Stalemates—indicates draws in three separate categories and signals which type applies: Stalemate, 50-move rule, opponent's or computer's move or position repeated three times.
- Player Mode—for regular 2-player games, the computer referees legal moves, draws and can even recommend a move when asked.
- Displays depth of ply search.

SOFTWARE SPECIFICATIONS:

65C02 Processor. Memory capacity is 128,000 bits of Read Only Memory (ROM). 16,000 bits of Random Access Memory (RAM).

HARDWARE FEATURES:

- Large 8" x 8" sensory playing surface.
- 16 Light Emitting Diodes (LED) indicate moves.
- Beep tone sounds automatically—to inform you that a move has been made.
- Approximately 100-250 hours of battery life.

HARDWARE SPECIFICATIONS:

Durable molded housing with storage compartment for chess pieces. Magnetic chess pieces and playing surface. Use 4 "C" size alkaline batteries (not included) or optional AC adaptor. 100% solid state. 11¼" x 10⅝" x 1⅝".

Fidelity Excellence Challenger (3 to 8 MHz) Fidelity Model EP12

(photo copyright © by <http://www.schaakcomputers.nl/>) (600 dpi)

SENSORY CHESS CHALLENGER®



Model CC8

ENJOY PORTABILITY WITH FEATURES AND SIZE OF OUR MORE ADVANCED MODELS. BATTERY OPERATED, CHESS CHALLENGER IS READY TO TEST YOUR SKILLS ANYTIME, ANYWHERE.

SOFTWARE FEATURES:

- Eight levels of playing difficulty from beginner to advanced.
- Levels changeable during game.
- Random computer responses make almost every game different.
- Take-Back feature allows you to take back 2 half-moves.
- Thinks on opponent's time for faster computer responses.
- Play white or black — change sides any time during a game.
- If available, and when asked, the computer will suggest a move for its opponent.
- Position verification by computer memory recall at any time during a game.
- Problem mode lets you set up mid-game positions or add and subtract pieces during a game.

SOFTWARE SPECIFICATIONS:

80C50 Processor running at 6 megahertz clock speed. Memory capability is 32,000 bits

of Read Only Memory (ROM). 256 bits of Random Access Memory (RAM).

HARDWARE FEATURES:

- 8" x 8" sensory playing surface automatically records your moves and illuminates computer's moves.
- Battery life 500 to 1000 hours.
- 16 Light Emitting Diodes (LED) indicate moves.
- Beep tone sounds automatically to inform you of proper entries and computer moves.

HARDWARE SPECIFICATIONS:

Durable molded housing with storage compartment on underside of housing for chess pieces. Includes magnetic pieces and playing surface (king 2" tall). Uses 4 "C" size alkaline batteries (not included). 11¼" x 10⅝" x 2½".

Fidelity Sensory Chess Challenger 8
Fidelity Model CC8

(photo copyright © by <http://www.schaakcomputers.nl/>) (600 dpi)

FIDELITY CHALLENGER SERIES

FIDELITY QUICK REFERENCE CHART

NAME	MINI	CHESS CHALLENGER	EXCELLENCE	SENSORY	SENSORY 5.0	ELEGANCE	ELITE 4.0
MODEL	MSC	CC8	EP12	SC12	SX12	AS12	E4
Estimated Rating	1200	1500	2050	1925	2000	1950	2050
6502 Speed	NA	NA	3 to 8	3	5	3.6	4
Levels	4	8	12	12	12	12	15
ROM (Bytes)	2K	4K	16k	20K	20K	20K	28K
RAM (Bytes)	128	256	2K	4K	4K	4K	4K
LED Display	16	16	16	16	16	64	64
Input System	sensory	sensory	sensory	sensory	sensory	auto-sensory	auto-sensory
Book Openings	—	100	3000	3000	3000	3000	5000
Modules	yes	—	—	yes	yes	yes	yes
Take Back Moves (ply)	—	2	22	256	256	256	256
Claims Draws	—	—	yes	yes	yes	yes	yes
Thinks on Opponent's Time	—	yes	yes	yes	yes	yes	yes
Saves Game in Memory	—	—	—	—	1 hour	1 hour	1 month
Displays Ply Depth	—	—	yes	—	—	—	yes
Chess Clock and Display	—	—	—	—	—	—	yes
Printer Outlet	—	—	—	yes	yes	yes	yes
Transformer	optional	none	optional	included	included	included	included
Battery Quantity/Size	6/AA	4/C	4/C	—	—	—	—
Alkaline Battery Life (approx. hours)	20	500 to 1000	100 to 250	—	—	—	—
Chessboard Inches: Centimeters:	4 x 4 10 x 10	8 x 8 20 x 20	8 x 8 20 x 20	10 x 10 25 x 25	10 x 10 25 x 25	10 x 10 25 x 25	14 x 14 36 x 36
Housing	plastic	plastic	plastic	wood	wood	wood	wood

Fidelity Quick Reference Chart - Centerfold

(photo copyright © by <http://www.schaakcomputers.nl/>) (600 dpi)

MINI SENSORY CHESS CHALLENGER®



Model MSC



SMALL IN SIZE, BIG ON PLAYABILITY. AND IT'S SENSORY, OF COURSE!

A computerized chess opponent that's always ready, willing, and very able to play whenever you're in the mood — any time, any place. Battery operated, it's ideal for use on that car or plane trip, at the beach or picnic, in a hotel room, or anywhere you have the time and the inclination.

Advanced Sensory playboard automatically recognizes and records your every move. Brightly lit LED's and beep tone graphically and audibly inform you of the Computer's response. Simply press down on the piece you are moving, and LED's light to show your "from" location. Press the piece down on your "to" location, and the Computer instantly knows which piece was moved and where it was moved to. No keys to press—you devote all your attention to the game.

Plays excellent chess, and provides these outstanding additional features:

- Infinite levels of play.
- Levels changeable during game; change from Level 1 to any level at any time, on any move.

- Random computer responses make every game different.
- Select offense or defense; play black or white. Change sides at any time during a game.
- Position Verification by Computer memory recall at any time during a game.
- Problem Mode lets you set up piece positions to work out problems. Add or subtract a piece during a game.
- Replaceable plug-in modules are available that greatly expand Mini Chess Challenger's capability.

Optional plug-in modules include: Advanced Chess Program, Book Openings I, and Greatest Games I.

Includes compact, impact-resistant plastic housing, 100% solid-state, dust cover and chess pieces. Works on 6 AA 1.5 volt alkaline batteries. Optional AC adapter available. 8½" long, 4½" wide, 1⅞" high (batteries not included).

Fidelity Mini Sensory Chess Challenger Fidelity Model MSC

(photo copyright © by <http://www.schaakcomputers.nl/>) (600 dpi)

PROGRAM CARTRIDGES



MINI SENSORY CHESS CHALLENGER

● ADVANCED CHESS PROGRAM (Model CAC)

The advanced program includes: six levels of play, thinks on its opponent's time for faster computer responses, move suggestion feature, take-back a move feature, over 100 book openings, and more.

● GREATEST GAMES I (Model CGG)

The Greatest Games cartridge provides chess enthusiasts an opportunity to test their skill and knowledge of the game. Any one of over 30 great games previously played by high-ranking chess masters can be replayed with you playing white or black.

● BOOK OPENINGS I (Model CBO)

62 Popular Chess Book Openings cartridge enhances playing experience by providing the opportunity to practice numerous standard opening moves that are in popular use by many chess players.

ELITE, ELEGANCE AND SENSORY 12 CHESS CHALLENGERS

● BOOK OPENINGS I (Model CB9)

Contains 8,160 book opening moves, all of which are unique. This book module has 381 lines to an average depth of 30 ply, so the effective number of positions in this book module is 11,430.

● BOOK OPENINGS II (Model CB16)

Contains 16,100 positions, all of which are unique. Contains 1,345 lines to an average depth of 20 ply, so that the effective number of positions in this book module is 26,900.

● 64 GREATEST GAMES (Model CG64)

Your 64 Greatest Games module will enable you to sit down with some of the world's greatest chess minds as you replay their most exciting games.

● TARRASCH DEFENSE (Model TDF)

The defense to the queens gambit leads to positions of an isolated pawn in the D file or hanging pawns on the C and D file. Over 12,000 moves is the largest number of moves devoted to one opening ever made in a module. In addition to presenting theory, forty whole games are illustrated between grandmasters from Znosko-Borovsky 1906 to Beliavsky-Kasparov 1983.

● ENCYCLOPEDIA OF CHESS OPENINGS (Five Module Set)

Each module contains an index which serves as a cross-reference to the other modules. If a position is reached which exists in the set, but not in that particular module, the index will automatically refer you to the appropriate module. Each module contains approximately 15,000 chess moves.

VOLUME C (Model EOC)

Contains the openings in which White plays E2-E4 and Black replies by E7-E6 or E7-E5.

VOLUME B (Model EOB)

Contains the openings in which White plays E2-E4 and Black replies with the movement of a piece other than its Kings Pawn.

VOLUME D (Model EOD)

Contains the Double Queen Pawn Openings, D2-D4.

VOLUME E (Model EOE)

Treats the black defenses to the Queen Pawn Opening.

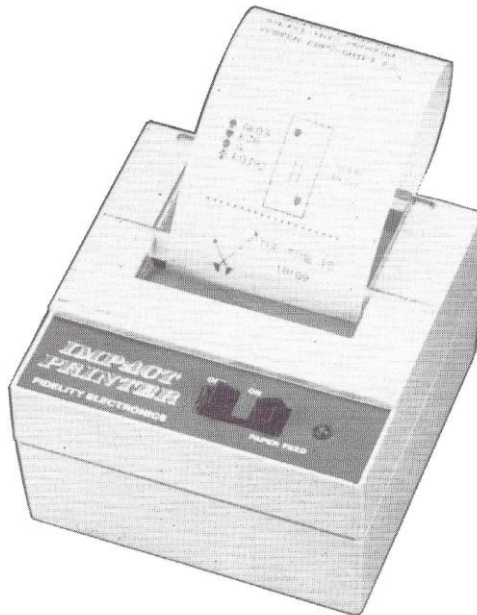
VOLUME A (Model EOA)

Covers openings initiated by moves other than E4 or D4.

Fidelity Program Cartridges

(photo copyright © by <http://www.schaakcomputers.nl/>) (600 dpi)

CHALLENGER[®] PRINTER



Model IFP

The Fidelity Challenger Printer is available for the serious expert or enthusiastic beginner. Now you can have a continuous printed record of every move in large, easy-to-read type. You can visually analyze moves, detect strategies, graphically record piece positions on the entire board and maintain a permanent record of each game. Here are some of the outstanding features of the Fidelity Printer:

- Records and numbers each move, with white's move and black's move on one single line.
- Displays current piece positions on entire board by printing a graphic display of white and black pieces in their actual locations on command.
- Advance paper at the push of a button.
- ON/OFF switch with Power ON Indicator light.
- Printer operation is entirely automatic—completely controlled by the information received from your Chess Challenger.

"Impact Printer" is housed in a creme-colored molded styrene case. Uses 2¼ inch adding machine paper roll available most anywhere. Equipped with wallmount transformer, ribbon, and roll of paper. 4" x 4½" x 2".

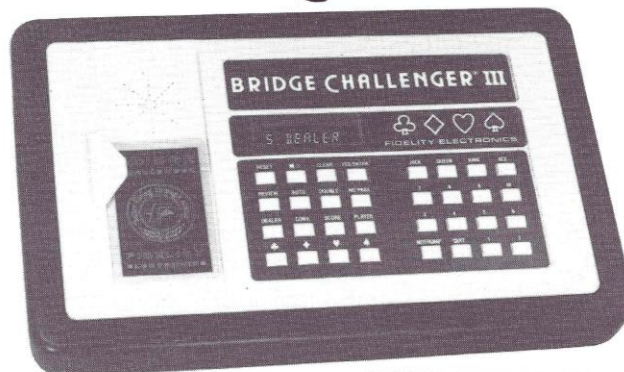
LEVEL 1		
01	E2-E4	C7-C5
	00:05	00:00
02	B1-C3	B8-C6
	00:14	00:00
03	F1-C4	C6-E5
	00:24	00:15
04	D2-D3	E5-C4
	00:08	00:12
06	G1-F3	C8-E6
	00:13	00:01
07	D1-D3	G8-F6
	00:04	00:03
T	01:24	00:33

Move Time and Game Time

Fidelity Challenger Printer (Model IFP)

(photo copyright © by <http://www.schaakcomputers.nl/>) (600 dpi)

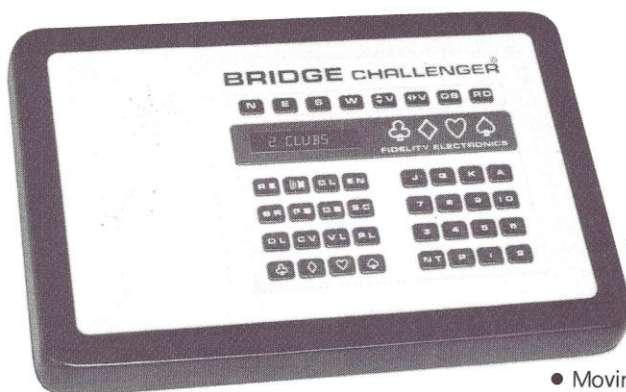
VOICE BRIDGE CHALLENGERS®



VOICE BRIDGE CHALLENGER III (Model BV3)

FOR THE SERIOUS PLAYER, CONTAINS OUR NEWEST AND STRONGEST BRIDGE PROGRAM IN BOTH BIDDING AND PLAYING ABILITY.

Also available, Model UB3 — same as Model BV3 without voice feature.



VOICE BRIDGE CHALLENGER II (Model BV2)

FOR BEGINNERS TO ADVANCED PLAYERS.

ONE OF THE WORLD'S MOST POPULAR CARD GAMES HOUSED IN THE MIND OF A MICROPROCESSOR ... AND THEY TALK TO YOU!

- Can be your partner (plays one hand).
- Can be your opponents (plays two hands).
- It's YOU against the computer (plays the other three hands).
- Or the computer will play all four hands while you observe.
- Clearly and audibly announces both human's and computer's bids and plays, using accepted bridge terminology.
- Optic scanner reads custom coded playing cards.
- Optional Random Dealing — if you wish, the computer will deal out four hands at random without using the cards and scanner.
- Automatic replay — the computer will take over all four hands at the press of a button and replay the deal you have just completed, making it easy for you to test your skill and/or play duplicate bridge against the computer.

- Moving message display keeps you informed throughout the game, including rubber bridge score keeping.
- During the bidding, uses such well-known conventions as Stayman, Blackwood, Gerber, Jacoby Transfers, Strong Two Club, Weak One No-trump Openers.
- Combines essential features of Standard American bidding with some aspects of such European systems as ACOL.
- Forms and executes a plan of play much like a human player.
- Rejects illegal bids.
- Displays Revokes.
- Single tone provides audio feedback each time a card is optically scanned or a key is pressed.
- Will review bidding and last trick on demand.
- Uses 232,000 bits of Read Only Memory (ROM).
- Has 8,512 bits of Random Access Memory (RAM).

Numerous other features, including a solid hardwood housing, 13½" x 8½" x 1½"; three felt playing fields, two decks of custom playing cards, deluxe carrying case.

Fidelity Voice Bridge Challenger II – Model BV2
Fidelity Voice Bridge Challenger III – Model BV3

(photo copyright © by <http://www.schaakcomputers.nl/>) (600 dpi)

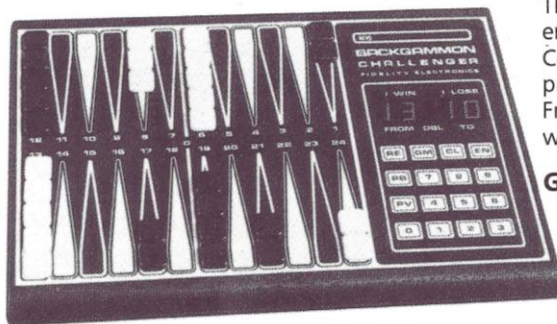
GIN & CRIBBAGE CHALLENGER®



Model GIN



Model BKC



BACKGAMMON CHALLENGER®

"IT'S YOU AGAINST THE COMPUTER."

Plays superb Backgammon and incorporates these quality features:

- Allows YOU, the human opponent to handle the dice.
- Uses all the strategies of the game of Backgammon, including playing a running game, hit and run, blocking and bear off games.
- Built-in Doubling feature.
- Plays offense or defense.
- Random computer responses vary every game.
- Position verification by computer memory recall.
- Includes Doubling Cube, magnetized pieces.
- Numerous other features, including a simulated wood-grained housing, 12 1/8" x 8" x 1" high, backgammon pieces, and 100% solid-state for years of trouble-free use.

Fidelity Gin & Cribbage Challenger – Model GIN
Fidelity Backgammon Challenger – Model BKC

(photo copyright © by <http://www.schaakcomputers.nl/>) (600 dpi)

The ideal companion for the GIN or CRIBBAGE enthusiast. Play anytime, even if you're alone. Communicates in any one of three languages—press a button to select English, German or French. Use real playing cards or the computer will generate random deals.

GIN RUMMY

1. Follows all rules of GIN RUMMY: Recognizes washouts, rejects illegal knocks.
2. Computer follows approved GIN RUMMY strategy, such as knocking frequently and striving for safe discards.
3. Play a single game where you may knock with 10 points or less on each deal, or choose among the following options: Hollywood (3 games in progress at once), Oklahoma (the up-card determines the maximum legal knock), GIN only.
4. Computer keeps score of all games, and maintains a cumulative total of points won or lost when you start the next game(s).

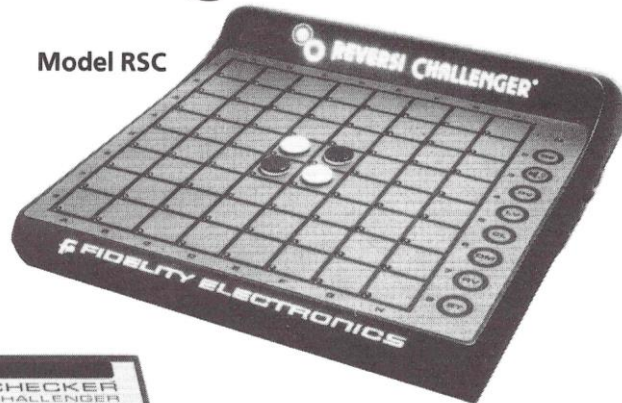
CRIBBAGE

1. Follows all rules of CRIBBAGE: Game ends immediately when one player scores 121 points, rejects any play that would exceed a total of 31.
2. Computer follows approved CRIBBAGE strategy, such as selecting appropriate cards for the crib and striving to score points during the play.
3. Computer displays each scoring play or holding, keeps score of the game, and maintains a cumulative total of games won.
4. Select the "skunk" scoring option if you wish.

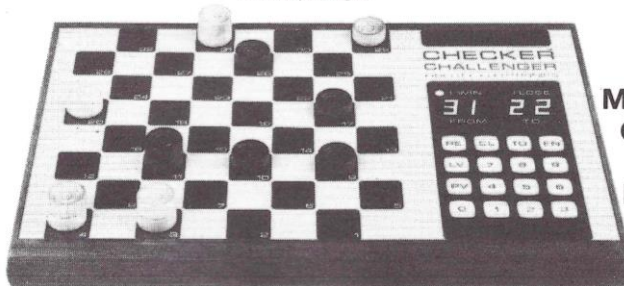
100% solid state. Solid hardwood housing, deluxe carrying case. Includes deck of custom playing cards, felt playing field, plug-in AC transformer. Size: 13 1/8" x 8 1/2" x 1 1/8".

REVERSI SENSORY CHALLENGER®

Model RSC



Model ACR



MATCH YOUR SKILL AND STRATEGY AGAINST THE INTERNATIONAL OTHELLO TOURNAMENT PROGRAM CHAMPION.

Reversi Challenger® features Fidelity's advanced Sensory playing surface—moves are automatically recognized and entered into the computer. Brightly lit LED's graphically illustrate from and to locations of each move, and pleasing tones audibly signal that a move was made.

Additional features include: 18 different levels of playing difficulty. As your skill improves, raise the level and the computer gets tougher. Select your most comfortable skill level.

- Skill levels changeable during a game.
 - Change sides with the computer at any time.
 - Reversi teacher: Will suggest your countermove upon request, or watch it play against itself.
 - Position Verification at any time. Computer is always able to show you where each piece is located.
 - Problem Mode lets you set up special problems for the computer to solve, or lets you add or remove pieces to change the advantage at any time.
 - Complete with reversible magnetic game pieces.
 - 100% solid-state in durable plastic housing. Uses four "C" size batteries (not included) or plug the AC adaptor into any convenient wall outlet.
 - Take-back feature allows you to reverse any number of moves at any time during a game.
 - Monitor Mode allows two humans to play. The computer checks each move to ensure it is legal, and lights up the squares to be "flipped."
- Size: 11¼" x 10⅝" x 2½".

CHECKER CHALLENGER®

CHECKER CHALLENGER® "4", like the other games in the CHALLENGER® Series, incorporates a sophisticated, reliable, decision-making microprocessor as its brain. This Computer's high level of thinking ability enables it to respond with its best countermoves—like a skilled human opponent. If YOU are not careful—the COMPUTER Will Win!!!!

Look at these features:

- Selection of offense or defense.
- Position Verification by Computer memory recall.
- Random Computer response vary every game.
- Change levels of difficulty before any move.
- Solves checker problems.
- Is a member of the American Checker Federation.
- Recalls Computer's last move for comparison of response at each level of difficulty.

Numerous other features, including a solid walnut case. 12⅞" x 8" x 1⅞" high, solid wood checker pieces, and 100% solid state for trouble-free use.

Fidelity Reversi Sensory Challenger – Model RSC
Fidelity Checker Challenger 4 – Model ACR

(photo copyright © by <http://www.schaakcomputers.nl/>) (600 dpi)

FIDELITY
CHALLENGER
SERIES



FIDELITY INTERNATIONAL, INC.

13900 N.W. 58 Ct., MIAMI, FLORIDA 33014
Telephone (305) 557-9800 TELEX: 51-5174

Fidelity Challenger Series 1985

(photo copyright © by <http://www.schaakcomputers.nl/>) (600 dpi)