

07-1986 [D-8301] Fidelity - **The Silver Bullet**

Voor zover ik gekeken heb, geven maar liefst drie bekende websites de verkeerde technische gegevens. Ik zal ze met de mantel der liefde bedekken. Er zou een Z80 CPU in zitten? Waarschijnlijk schrijven ze elkaars foutieve gegevens over, want de oude literatuur heeft het steeds over een 80C50 CPU! **The Silver Bullet** verscheen al in 1986 in de USA en waarschijnlijk pas in 1987 in Europa. De zwart/zilver kleurige uitvoering ziet er gerieflijk uit!



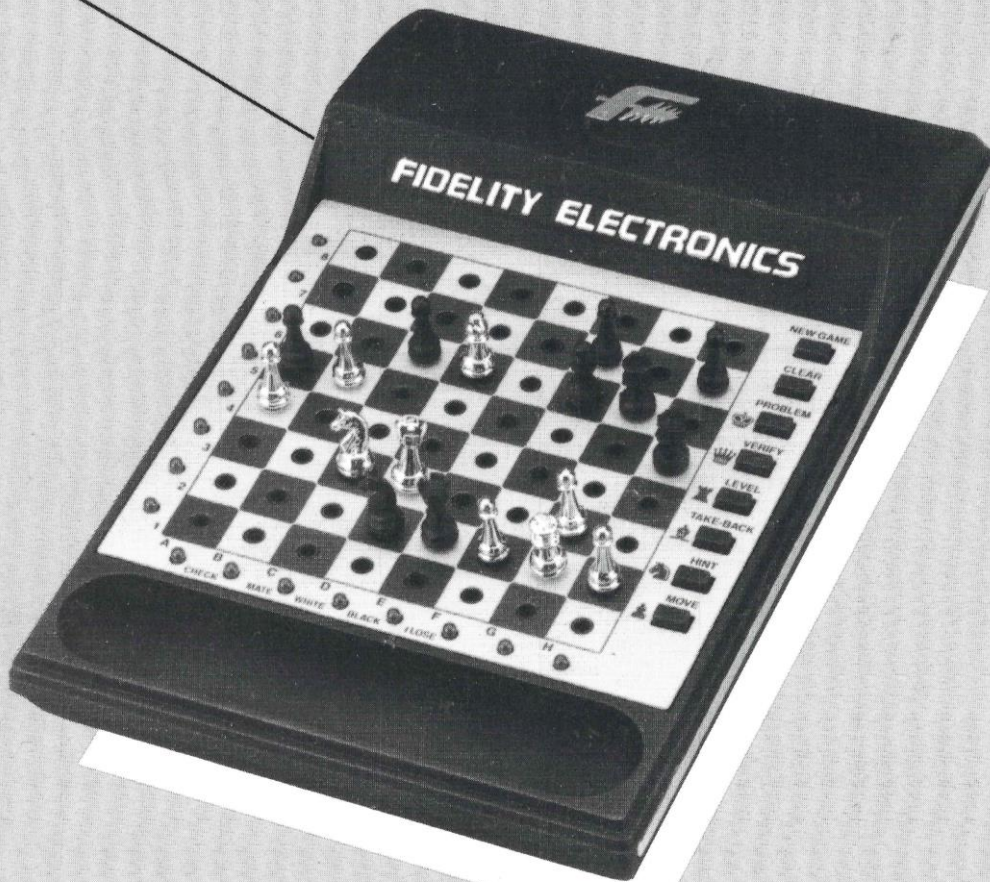
Kunststoff Reisegerät mit Stecksensorbrett und Koordinatenanzeige (16 Dioden). Netzbetrieb: 300 mA. Batteriebetrieb: 6 AA (300 Stunden). 8 Spielstufen. Über 100 Eröffnungszügen. Das 4-KB-Programm kann durch ein Zusatzmodul verstärkt werden. Schachbrett: 10 x 10 cm. Ehemalige VKP: DM 149,00 DM. Gesamtgröße: 21,2 x 11,2 x 4,5 cm.



Eight levels of playing difficulty from beginner to advanced. Random computer responses make almost every game different. Take back feature allows you to take back 2 half-moves. Thinks on opponents time for faster computer responses. Play white or black and change side any time during a game. If available, and when asked, the computer will suggest a move for it's opponent. Position verification by computer memory recall at any time during a game. Problem mode lets you set up mid-game positions or add and subtract pieces during a game. Battery life: 6 AA alkaline size for 160 to 300 hours. 16 Light Emitting Devices (LED) indicate moves. Beep tone sound automatically to inform you of proper entries and computer moves. Allows castling, en passant, and pawn promotion. Problem solving mode (forced mate in 2 ~ 3 moves). Opening book contains over 100 half-moves. Dust cover. Piece storage. Optional AC adaptor.

THE SILVER BULLET

OWNER'S MANUAL
INSTRUCTION BOOKLET
MODEL 6087



The Silver Bullet – Model 6087

Re: Silver Bullet data special for Robert Weck!

Kurts Schachcomputer Forum

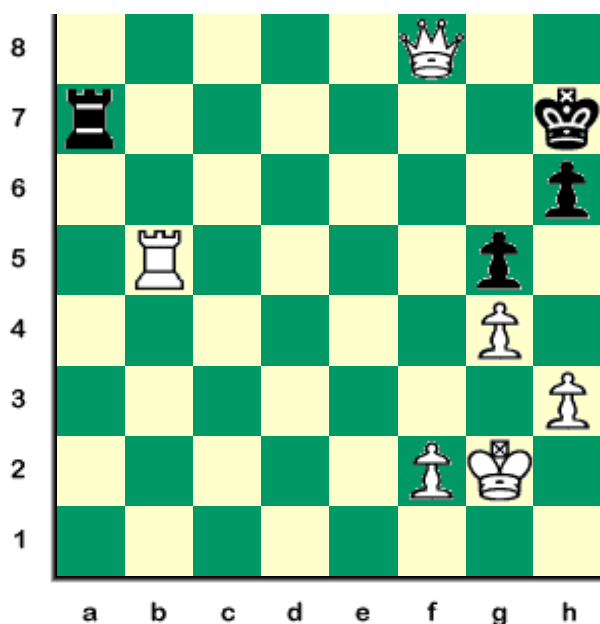
Geschrieben von Steveb am 22. Juli 2007 12:06:03: Als Antwort auf: **Silver Bullet** data special for Robert Weck, geschrieben von Hein Veldhuis am 22. Juli 2007 01:46:07:

hi Hein

The Silver Bullet is the portable equivalent of **the Gambit** both released at the same time. **Gambit** = Desktop. **Silver Bullet** = Portable Version. **The Gambit** is NOT the same as **Mini Sensory** with **CAC** or **Sensory Chess Challenger 6** with **BO6** modules. There are different features in **Gambit** and i think program is different. No **AC6** module for **Sensory Chess Challenger 6** was released for sale, only **BO6** (Book Module) and **CG6** (Great Games).

Phantom Force and NYTIMES DTTC send their regards,
Steveb

Posted: Wed Jul 25, 2007 12:02 am



Due to an unprecedented demand by collectors worldwide (2 collectors) i have been asked to now compare the **Fidelity Sensory Chess Challenger 6** against the **Mini-Sensory** with **CAC module**. In the above position on the two minute level the **Sensory Chess Challenger 6** plays Qf6. So for the three different computers we have three different moves:

Silver Bullet: Qf5+

Mini Sensory + CAC: Rb6

Sensory Chess Challenger 6: Qf6

Conclusion: three different programs!

Regards,
Steveb

NAME	SILVER BULLET	CLASSIC	GAMBIT
MODEL NO.	6087	6079	6095 / 6084
ESTIMATED RATING	1500	1500	1500
MICROPROCESSOR	80C50	80C50	80C50
MEGAHERTZ SPEED	6	6	6
LEVELS	8	8	8
ROM (BYTES)	4K	4K	4K
RAM (BYTES)	256	256	256
BOARD LEDS	16	16	16
DISPLAY WINDOW	—	—	—
INPUT SYSTEM	Sensory	Sensory	Sensory
BOOK OPENINGS	100	100	100
CARTRIDGES	Yes	—	—
TAKES BACK MOVES (PLY)	2	2	2
CLAIMS DRAWS	—	—	—
THINKS ON OPPONENT'S TIME	Yes	Yes	Yes
DISPLAYS PLY DEPTH	—	—	—
PRINTER OUTLET	—	—	—
TRANSFORMER	Optional	Optional	Optional
BATTERY QUANTITY/SIZE	6/AA	4/C	4/C
MAXIMUM BATTERY LIFE HOURS	300	500	250 / 500
CHESS BOARD: INCHES CENTIMETERS	4 x 4 (10 x 10)	8 x 8 (20 x 20)	8 x 8 (20 x 20)
OVERALL SIZE: INCHES CENTIMETERS	8.5 x 4.5 x 1.8 (21.25 x 11.25 x 4.5)	11.25 x 10.6 x 2.5 (28 x 26.25 x 6.25)	11.25 x 10.6 x 1.6 (28 x 26.25 x 3.75)
VOICE FEATURE	—	—	Yes / No
HOUSING	Plastic	Plastic	Plastic

Fidelity »Intelligent Computer Games« 1987

Silver Bullet (1986), The Classic (1985), The Gambit (model 6084 uit 1986 en The Gambit Voice als model 6095 uit 1987) schaaktechnisch 100% gelijk zijn!!

(photo copyright © by <http://www.schaakcomputers.nl/>) (600 dpi)

WOOD FOR GIFTGIVERS			PLASTIC FOR THE MASSES			HAND-HELDS FOR JUNIOR			SOFTWARE FOR PC'S		
in price order			Tabletops in price order			list			(none are over 'B' strength)		
		list			(\$100 - \$300 range)						
AVE	AVE 4.0	\$700			list	Mephisto	Mondial	\$150		Sargon 3.0	
Conchess	Monarch w/82 program	\$600	CXG	Chess 2001 (auto-sensory)	\$300	CXG	Star Chess	\$100		Psion	
Conchess	Ambassador w/82 program	\$400	CXG	Mark VII	\$265	CXG	Advanced Porta-chess	\$100		Collois	
Fidelity	Elegance	\$400	CXG	Super Enterprise 'C'	\$250	Scisys	Express 16K	\$100		Chess Master 2000	
CXG	Chess 3001	\$400	Novag	Constellation 3.6	\$250	CXG	¹ Porta-chess	\$ 70		Chess Monster (1-1/2 in Dallas)	
Scisys	Leonardo (LED's on coordinates)	\$350	CXG	Super Enterprise	\$200	CXG	Compu-chess	\$ 70		Atari Kempelen (0 points in Dallas)	
Fidelity	Chess Challenger 12 (LED's on coordinates - not auto-sensory)	\$250	CXG	Compu Chess IV	\$200	*Chess King	Pocket Micro Deluxe	\$ 70			
			Scisys	Turbostar 432	\$200	Novag	Piccolo	\$ 60			
			CXG	Enterprise 'S'	\$165	Fidelity	silver bullet	\$ 60			
			CXG	Crown	\$165	*Chess King	Mighty Midget	\$ 50			
			CXG	Compu Chess III	\$165	Novag	Prelude	\$ 50			
			CXG	Mark II	\$165	Scisys	Pocket Chess	\$ 50			
			Fidelity	Excellence	\$125	Applied Concepts	Diplomat	\$ 50			
			Scisys	Turbo 16K	\$125	CXG	Pocket Chess	\$ 40			
			CXG	Compu Chess II	\$120						
			CXG	Compu Chess I	\$100						
			Scisys	Mark 12	\$100						
			Novag	Allegro	\$100						

Although some software can run on some pretty fast hardware, such as the IBM AT or Compaq, software manufacturers are relegated older or weaker programs. Also dedicated chess computer manufacturers are always one step ahead in speed. For instance in the Conchess T8 the 6502 goes up to 8 MHz vs Apple's 1 MHz, or in the souped-up Mephisto 'S' the 68000 is up to 20 MHz vs MacIntosh's 8 MHz (effectively 5.7 MHz). Bit-slice technology can also be attached to an Apple (but for \$3,500) and there it is limited to only a 10-fold increase (10 MHz) versus the dedicated computer's 16 MHz.

The strength of a program is quite simply decided by the kind of chip, the internal clock speed (MHz) it can reach, and how talented the programmer is at optimizing a limited amount of memory allotted to him by the manufacture (a major cost consideration).

For the top-end, over \$1000 range, the programmers are often given free reign. Still they do best to use as little memory as feasible and write a tightly coded program executing instructions quickly.

(continued top of next page)

* Not covered in the article. Mentioned here just for completeness. Chess King is Levy's company, but he saves his top programming for other companies' brands.

¹ New with 16 levels. One of the most, if not the most popular chess computers ever - sales approaching 1 million pieces.

Fidelity Silver Bullet (model 6087) was in de USA al in 1986 te koop!

(Source: Players Chess News, November 24 1986) (photo copyright © by <http://www.schaakcomputers.nl/>) (600 dpi)

Programmierer / Programmer

- Ronald C. Nelson

Baujahr / Release

- Erste Einführung: Juli (?) 1986

Technische Daten / Technical specifications

- Mikroprozessor: 80C50
- Taktfrequenz: 6 MHz (!)
- Programmspeicher: 4 KB ROM
- Arbeitsspeicher: 256 byte RAM

Spielstärke / Playing strength

- Spielstärke (DWZ/Elo): ca. 1300

Verwandt / Related (more or less)

- Fidelity Chess Challenger (Super) 7
- Fidelity Chess Challenger Sensory 8
- Fidelity Sensory Chess Challenger 6
- Fidelity Chess Challenger Poppy
- Fidelity Sensory Chess Challenger
- Fidelity The Classic
- Fidelity The Gambit (first edition - model 6084)
- Fidelity The Gambit (second edition - model 6084D)
- Fidelity The Gambit Voice