

03-1987 [C-6126] Fidelity - **The Gambit** (second edition - model 6084D)

Ergens in het voorjaar van 1987 kwam Fidelity met een tweede uitvoering van **The Gambit**. De bedieningstoetsen waren duidelijker (groter) en de naamplaat kreeg ook een ander design.



Links op de afbeelding = model 6084D (second edition)
en rechts = model 6084 (first edition)



Op de afbeelding hierboven is goed te zien waar de verschillen zitten. Fidelity nam niet eens de moeite om de verpakking en handleiding aan te passen!

Re: Silver Bullet data special for Robert Weck!

Kurts Schachcomputer Forum

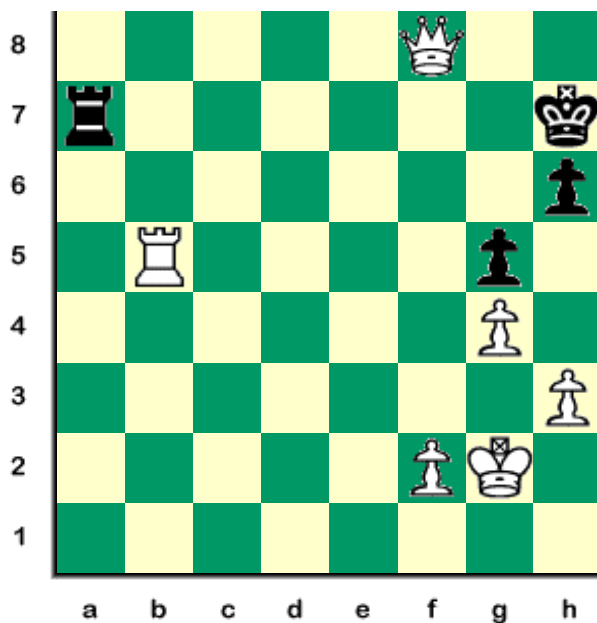
Geschrieben von Steveb am 22. Juli 2007 12:06:03: Als Antwort auf: **Silver Bullet** data special for Robert Weck, geschrieben von Hein Veldhuis am 22. Juli 2007 01:46:07:

hi Hein

The Silver Bullet is the portable equivalent of **the Gambit** both released at the same time. **Gambit** = Desktop. **Silver Bullet** = Portable Version. **The Gambit** is NOT the same as **Mini Sensory** with **CAC** or **Sensory Chess Challenger 6** with **BO6** modules. There are different features in **Gambit** and i think program is different. No **AC6** module for **Sensory Chess Challenger 6** was released for sale, only **BO6** (Book Module) and **CG6** (Great Games).

Phantom Force and NYTIMES DTTC send their regards,
Steveb

Posted: Wed Jul 25, 2007 12:02 am



Due to an unprecedented demand by collectors worldwide (2 collectors) i have been asked to now compare the **Fidelity Sensory Chess Challenger 6** against the **Mini-Sensory** with **CAC module**. In the above position on the two minute level the **Sensory Chess Challenger 6** plays Qf6. So for the three different computers we have three different moves:

Silver Bullet: Qf5+

Mini Sensory + CAC: Rb6

Sensory Chess Challenger 6: Qf6

Conclusion: three different programs!

Regards,
Steveb



FIDELITY INTERNATIONAL, INC.

13900 N.W. 58th Ct., MIAMI, FLORIDA 33014
Telephone: (305) 557-9800 Telex: 51-5174 Telefax: (305) 558-8487

ACCESSORY/REPLACEMENT PARTS
PRICE LIST AND ORDER FORM
Effective April 1, 1987

With the exception of Gin-Cribbage, Bridge and Elite Challengers, it is necessary for you to know the model number of the Fidelity product you own in using this list to ensure that you locate the correct parts or accessories on the chart (see reverse). For your assistance, the following models are listed by number and description:

6085 - Elegance B (also known as AS12B)
6086 - Sensory 12 (also known as SC12 or SC12B)
6094 - Excel 68000
6093 - Excel Display
6083 - Par Excellence
6080 - Excellence (same parts for Excellence 4.0)
SC9 - Sensory 9
6092 - Excellence Voice
CSC - Champion Sensory
VSC - Voice Sensory
VCC/UVC - Voice Chess Challenger
6079 - Classic Chess Challenger
6084 - Gambit Chess Challenger
6095 - Gambit with Voice
SCC - Sensory "8"
6087 - Silver Bullet
6052 - Mini Sensory
BB - Bridge Bidder
ACR - Checker Challenger 4
BKC - Backgammon
IFP/1007 - Fidelity Printer
6096 - Micro Chess Challenger

Cartridges for 6052

<u>Description</u>	<u>Model/Part #</u>	<u>Price Each</u>
Advanced Chess	CAC/6.1055A01	\$39.00
*Book Openings	CBO/6.1058A01	\$39.00
*Great Games	CGG/6.1059A01	\$39.00

*can also be used with model 6087

Instruction Booklets

<u>Description</u>	<u>Price Each</u>
All Elite Models, 6085, 6086, 6094, CSC	\$ 5.00
All other models except 6096 (YOU MUST SPECIFY MODEL OF YOUR GAME WHEN ORDERING)	\$ 2.50
6096 Manual	\$ 1.00

Fidelity International – April 1, 1987

(photo copyright © by <http://www.schaakcomputers.nl/>) (600 dpi)

NAME	SILVER BULLET	CLASSIC	GAMBIT
MODEL NO.	6087	6079	6095 / 6084
ESTIMATED RATING	1500	1500	1500
MICROPROCESSOR	80C50	80C50	80C50
MEGAHERTZ SPEED	6	6	6
LEVELS	8	8	8
ROM (BYTES)	4K	4K	4K
RAM (BYTES)	256	256	256
BOARD LEDS	16	16	16
DISPLAY WINDOW	—	—	—
INPUT SYSTEM	Sensory	Sensory	Sensory
BOOK OPENINGS	100	100	100
CARTRIDGES	Yes	—	—
TAKES BACK MOVES (PLY)	2	2	2
CLAIMS DRAWS	—	—	—
THINKS ON OPPONENT'S TIME	Yes	Yes	Yes
DISPLAYS PLY DEPTH	—	—	—
PRINTER OUTLET	—	—	—
TRANSFORMER	Optional	Optional	Optional
BATTERY QUANTITY/SIZE	6/AA	4/C	4/C
MAXIMUM BATTERY LIFE HOURS	300	500	250 / 500
CHESS BOARD: INCHES CENTIMETERS	4 x 4 (10 x 10)	8 x 8 (20 x 20)	8 x 8 (20 x 20)
OVERALL SIZE: INCHES CENTIMETERS	8.5 x 4.5 x 1.8 (21.25 x 11.25 x 4.5)	11.25 x 10.6 x 2.5 (28 x 26.25 x 6.25)	11.25 x 10.6 x 1.6 (28 x 26.25 x 3.75)
VOICE FEATURE	—	—	Yes / No
HOUSING	Plastic	Plastic	Plastic

Fidelity »Intelligent Computer Games« 1987

Silver Bullet (1986), The Classic (1985), The Gambit (model 6084 uit 1986 en The Gambit Voice als model 6095 uit 1987) schaaktechnisch 100% gelijk zijn!!

(photo copyright © by <http://www.schaakcomputers.nl/>) (600 dpi)



Fidelity The Gambit (second edition)

Programmierer / Programmer

- Ronald C. Nelson

Baujahr / Release

- Erste Einführung: März (?) 1987

Technische Daten / Technical specifications

- Mikroprozessor: 80C50
- Taktfrequenz: 6 MHz (!)
- Programmspeicher: 4 KB ROM
- Arbeitsspeicher: 256 byte RAM
- Zugeingabe: Drucksensoren
- Zugausgabe: 16 Rand LEDs
- Stromversorgung: Batterie = 4 x C, Netz = 6V 300mA
- Maße (BxTxH): 28 x 26 x 3,8 cm
- Spielfläche: 20 x 20 cm

Spielstärke / Playing strength

- Spielstärke (DWZ/Elo): ca. 1300

Verwandt / Related (more or less)

- Fidelity Chess Challenger 7
- Fidelity Chess Challenger Super 7
- Fidelity Chess Challenger Sensory 8
- Fidelity Sensory Chess Challenger 6
- Fidelity Chess Challenger Poppy
- Fidelity Sensory Chess Challenger
- Fidelity The Classic
- Fidelity The Gambit (first edition – model 6084)
- Fidelity The Gambit Voice
- Fidelity The Silver Bullet